

CENTRAL BUSINESS SYSTEMS NEWSLETTER

Spring 2025



Top News

Stay ahead of the game with our newsletter! Get the latest trends, expert insights, and groundbreaking innovations driving the future of IT and cybersecurity—delivered straight to your inbox.

A simple way to make your printing more private and efficient

Like all areas of technology, printing continues to advance. Apps like PaperCut are easy to use and help make printing more secure, convenient and efficient.

With PaperCut, you manage your printer fleet on a server or private cloud. Instead of sending your print job to a specific printer, it goes to a general queue. From there the job can be output on any printer in your fleet that has a screen. You go up to the printer of your choice, use a code or ID badge for authentication, and release your print job(s) to promptly come out.

con't page 2



#ManagedPrint #PaperCut

A simple way to make your printing more private and efficient *cont'd*

This innovation allows for several advantages, the most important of which is privacy. Theft of information commonly occurs when something confidential is left on a printer and someone else walks away with it. In the healthcare field, HIPAA compliance requirements prohibit the intermingling of printed records for different patients due to the chance that some pages could be mixed up. With PaperCut, you can release one specific job at a time and it prints right in front of you on demand, so it's not sitting on a printer or mixing with other jobs.

PaperCut and similar apps also allow for added convenience. Say you're based in your company's Long Island office, but the headquarters is in Manhattan. If you're at a meeting at headquarters and you need to print the annual report, you can simply have it sent to a printer in that office.

Use of these apps also cuts down on wasted printing. How many times do you press print, and then realize you have to make another revision? With PaperCut, your job is held in the queue and can easily be deleted, allowing you to revise your document and resend it.

PaperCut also allows you to limit the use of inefficient desktop printers. Printer fleets often include advanced commercial multi-function machines and smaller desktop printers, which are less efficient but are located near certain people to allow for greater privacy and/or convenience. Desktop printers are the largest unaudited expense in America today. Relative to commercial machines, which are generally professionally managed and highly efficient, desktop printers are inefficient due to the high cost of printer cartridges, which are typically purchased from retailers like Staples or WB Mason. It costs three to five times more to print a page on a desktop printer than a commercial machine. PaperCut alleviates the need to use desktop printers for privacy, and you can use either a hammer or feather approach to steer people toward the more efficient commercial machines. With the feather approach, users who go to print a certain number of pages – say more than five – will receive a message stating that the company is trying to save money and asking them to print onto one of the commercial copiers, since it's less expensive. With the hammer approach, you limit the number of pages – say, five – that can be printed to a desktop.

PaperCut and similar apps allow you to track printing expenses and run reports on how many pages were printed monthly per individual or department. By attaching pin codes or user names to print jobs, you can cut down on unauthorized printing. People will be more hesitant to print Boy Scouts newsletters or garage sale flyers if they know their printing activity is being counted.

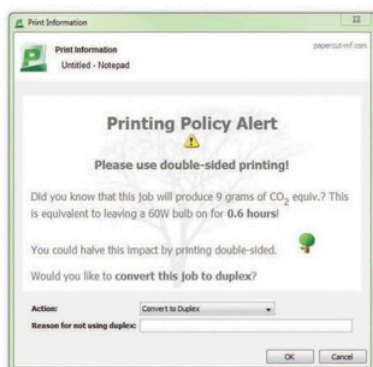
Apps like PaperCut can save organizations up to 30% in printing costs while enhancing privacy.



Report Use - Reduce Cost - Secure Print Manage Print, Copy, Scan and Fax

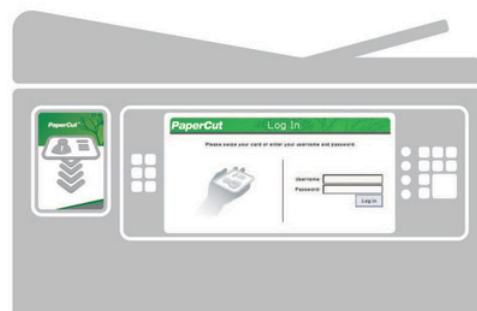
Intuitive and Easy to Use

PaperCut MF is regarded as the simplest system of its type to deploy and manage. System administrators have full access to administration and configuration via a familiar web interface.






It offers:

- User directory (eg. Active Directory and others) integration and automatic user account creation
- Secure print release and Find-Me printing
- Administrator dashboard with real-time status updates
- Web Print: Driverless printing for wireless devices
- Optional client and account billing
- Ability to encourage responsible use via popup notifications



Benefits of PaperCut

-  **Control cost**
-  **Manage copiers**
-  **Report usage**
-  **Access devices**
-  **Responsible Usage**
-  **Secure documents**

Powerful Job Scripting

Advanced scripting can be used to define and finely tune your printing policy and support your organization in eliminating waste and changing user behavior.



With PaperCut you can:

- Automatically route large jobs to detected high volume printers
- Discourage printing of emails via popup print policy warnings
- Encourage double sided printing
- Discourage or disable color printing by user group
- Least cost routing (suggest more cost effective devices based on conditions)
- Allow free printing (e.g. during class times)
- Define action by job attribute, user / group, period of day, device feature / type

See environmental impact at a glance
with the Paper-Less Alliance widget

Secure Print Release

PaperCut's Find-Me printing feature enables users to print to a global virtual queue. Jobs are paused and only printed when the user releases the job at any compatible MFD/prINTER:

- Improved document security and convenience.
- Reduce IT administrators needed to manage multiple print drivers and queues for both workstations and notebooks.
- Find-Me printing minimizes waste and has been shown to reduce printing output by up to 20% in busy office environments.
- Support for multiple release methods ranging from auto release on authentication to active release job-by-job.

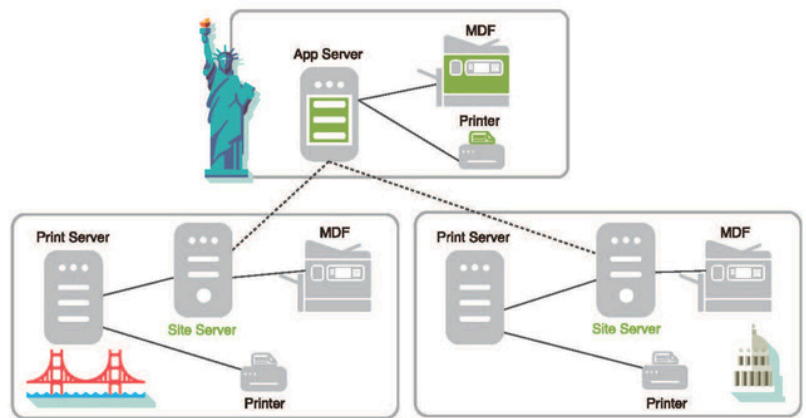


End users can view and manage held print jobs at the MFD

Site Server Module

The Site Server gives the risk averse customer peace of mind that access to printing resources is still available during unexpected network dropouts. Maintain critical services of MFD access and Printing during an outage.

- High availability printing and copying
- Transactions are recorded



Technical Specifications

Scalability:

- 5 to 500,000+ users

Architecture

- Single server or multi-server environments
- Monitor locally attached printers
- Client software is optional
- 32-bit and 64-bit native

Supported Server Operating Systems:

- Microsoft Windows Server (any edition including 64-bit and server core)
- Mac OS X Server (10.4 or higher)
- Linux (any modern distribution)
- Novell OES Linux and iPrint

User Directory:

- Active Directory (native integration including nested groups and OU's)
- OpenDirectory
- eDirectory
- LDAP
- NIS, PAM, Samba, and others

Encryption:

- SSL encryption used for sensitive client server communication.

Supported Failover

- Microsoft Failover Server
- Microsoft Cluster Server
- Veritas Cluster Server
- Linux HA and Novell Cluster

Supported Workstation Operating Systems:

- Microsoft Windows (any edition)
- Mac OS X (10.4 or higher)
- Linux (any modern distribution)
- Unix Workstation (Java required to run client software)

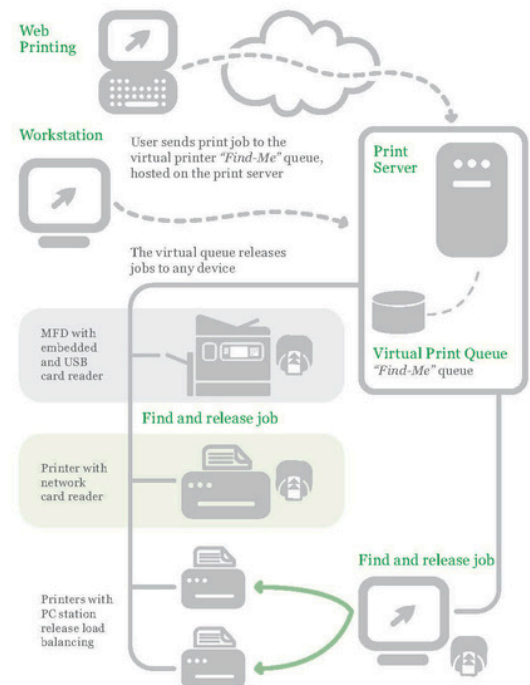
Database Servers:

- Self managing internal database: suitable for up to 5,000 end users
- Microsoft SQL Server 2000/2005/2008/2012/2014 (either 32 or 64 bit)
- Microsoft SQL Express 2005/2008/2012/2014 (free from Microsoft)
- PostgreSQL 7.1 or higher
- MySQL 5.0 or higher
- Oracle 9.2 or higher

Licensing:

- Unlimited printers, servers and workstations.

Find Me Printing



A global print queue provides convenience for end users and helps keep documents secure

WORKING IN PARTNERSHIP: ENHANCING YOUR IT TEAM

A Smarter Approach to IT Management

Gone are the days of choosing between in-house IT and outsourced solutions. A co-managed IT service blends the strategic framework of your internal IT team with the expertise and scalability of a managed-service provider.

How We Support Your IT Team

- Task Delegation – Offload routine or specialized tasks to free up your team's time.
- Security & Compliance – Ensure your organization meets critical industry standards.
- Advanced Technical Expertise – Gain access to specialized skills and certifications.
- Proactive & Reactive Support – Address IT issues before they escalate.
- Project Execution – Assistance with complex or stalled IT projects.
- License Optimization – Reduce costs on software and cloud services.
- Extended Coverage – Support for locations, users, or hours your team can't cover.
- Digital Transformation – Implement modern IT solutions to drive efficiency.



Join us at the SCO Inspiration Ball – Lighting the Path to Brighter Tomorrows for children, youth, and families in the Long Island/NYC area.

To purchase sponsorships and tickets, see link: bit.ly/4hezYnB

We are currently hiring for the following positions:

- Sales (Telecommunications, IT Services, Copier/Printer MFP's)
- Service Technicians (Copier/Printer MFP Maintenance & Repair)
- IT Systems Engineer (Level 1 & 2)
- Administration & Customer Support

Why Central Business Systems?

- Competitive salary & benefits
- Opportunities for growth and advancement
- A supportive work environment
- Long Island Business News Best Place to Work 2024

Ready to take the next step in your career? Apply today!

Please send your resume to Tom Drago, tdrago@centraldigitalsolutions.com.

(631) 249-1990

team@centraldigitalsolutions.com
centraldigitalsolutions.com

